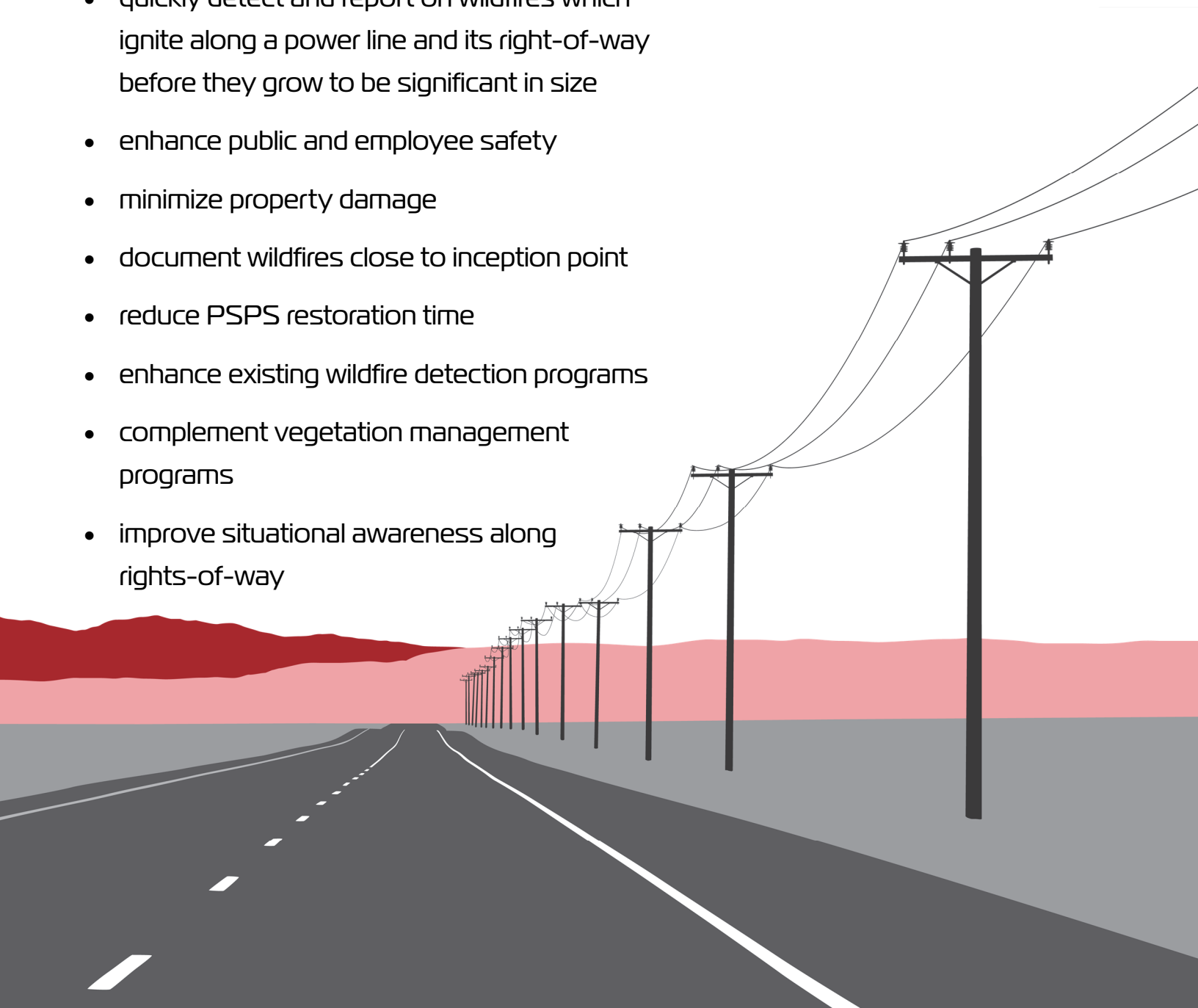


## Why Should Electric Utilities Deploy the FIREBird Rapid Wildfire Detection System Along Power Lines?

Power line fires become, on average, 10x larger than other wildfires!. The FIREBird System is a defensive wildfire monitoring system that quickly detects and reports wildfires along power lines.

### **FIREBird offers the ability to:**

- quickly detect and report on wildfires which ignite along a power line and its right-of-way before they grow to be significant in size
- enhance public and employee safety
- minimize property damage
- document wildfires close to inception point
- reduce PSPS restoration time
- enhance existing wildfire detection programs
- complement vegetation management programs
- improve situational awareness along rights-of-way



# FIREBird Rapid Wildfire Detection System

## Protect Critical Areas of the Electrical Grid

### Key Features of the FIREBird System

- detects fires as small as 5 ft by 5 ft across a 60-acre area.
- detects larger fires up to 10 miles distant<sup>2</sup> on either side of the power line.
- reports fires typically within 2 minutes
- obtains images of detected fires quickly
- reports on weather conditions
- collects right-of-way images to enhance PSPS recovery
- operates autonomously
- interfaces with existing control and dispatch software

### Placement of FIREBird on Your Electric System

Easily installed FIREBird devices can be placed in any vulnerable area in your system:

- distribution lines
- transmission lines
- substations



<sup>1</sup>Mitchell, Joseph W; "Power line failures and catastrophic wildfires under extreme weather conditions"; Journal of Engineering Failure Analysis #35, 2013, page 3, Table 1

<sup>2</sup>Detectable fire size may be larger or smaller depending upon terrain, foliage, and obstructions. Contact Lindsey FireSense for more information.