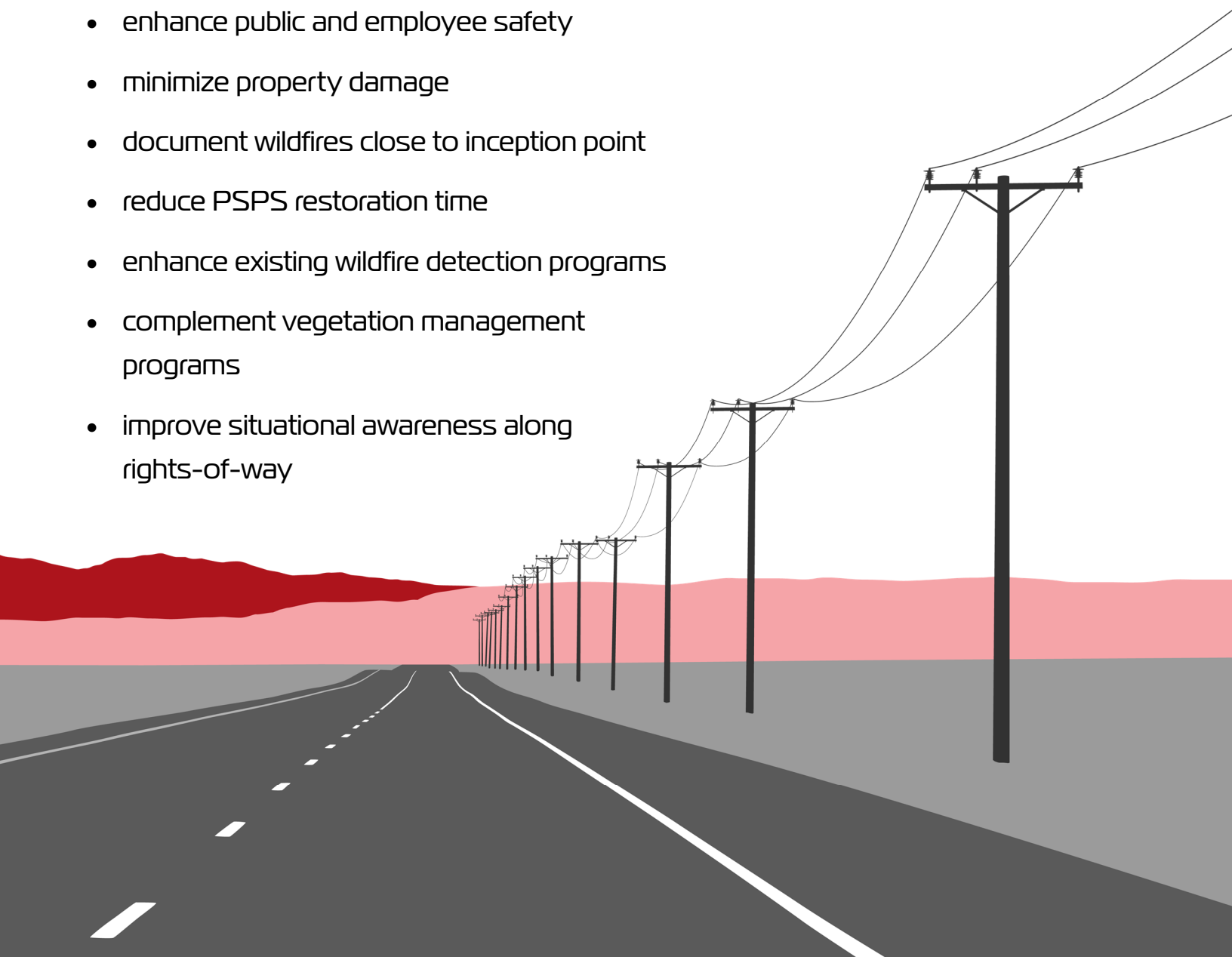


Why Should Electric Utilities Deploy the FIREBird Rapid Wildfire Detection System?

Power line fires become, on average, 10x larger than other wildfires!. The FIREBird System is a defensive wildfire monitoring system that quickly detects and reports wildfires along power line rights-of-way.

FIREBird offers the ability to:

- detect wildfires near power lines before they grow to be significant in size
- enhance public and employee safety
- minimize property damage
- document wildfires close to inception point
- reduce PSPS restoration time
- enhance existing wildfire detection programs
- complement vegetation management programs
- improve situational awareness along rights-of-way



FIREBird Rapid Wildfire Detection System

Protect Critical Areas of the Electrical Grid

Key Features of the FIREBird System

- detects fires as small as 5'x5' from as far as 900 feet away
- reports fires typically within 2 minutes
- obtains images of detected fires quickly
- reports on weather conditions
- collects right-of-way images to enhance PSPS recovery
- operates autonomously
- uses a mobile friendly web-interface
- interfaces with existing control and dispatch software

Placement of FIREBird on Your Electric System

Easily installed, FIREBird devices can be placed in any vulnerable area in your system:

- distribution lines
- transmission lines
- substations
- control centers

¹Mitchell, Joseph W; "Power line failures and catastrophic wildfires under extreme weather conditions"; Journal of Engineering Failure Analysis #35, 2013, page 3, Table 1

Lindsey FireSense LLC
760 N. Georgia Avenue | Azusa, CA 91702 USA
Tel. +1-626-969-3471 | www.Lindsey-FireSense.com

©2022 Lindsey FireSense and FIREBird are trademarks or registered trademarks of Lindsey FireSense LLC
Multiple U.S. and foreign patents pending.
Specifications subject to change without notice.

Publication Number FB-B-003 • October 2022



LINDSEY
FireSense